

Type CDR125 (10 ~ 820) μ H

Dimensions(mm)

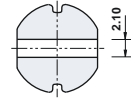
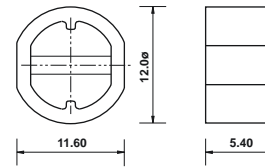
- # Ferrite core
- # Ferrite shielded
- # High S.R.F.

The type CDR125 smd inductors provide high inductance and rated d.c. current with small size and are ferrite shielded. They are very high quality components which may be assembled using reflow or wave soldering techniques and supplied packed in bulk or on 16mm tape and reel, 500 pieces per reel. Maximum rated current is based on a temperature rise of +40°C and a maximum inductance fall to 80% of the original value.

Electrical specification

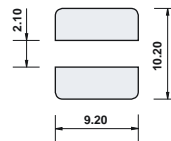
Inductance value	(10 ~ 82) μ H at 2.52MHz (100 ~ 820) μ H at 1kHz
Core material	Ferrite
Temperature range	(-25 +70)°C
Moisture resistance	H \pm 5% max., Q \pm 10% max., relative humidity 90% ~ 95%, +40°C, 24 hours
Marking	Date code, inductance code
Insulation resistance	100M Ω min.
Voltage rating	100Vd.c.

Temperature coefficient	(0 ~ 2000)ppm/°C
Vibration	\pm 2% max., (10 ~ 55)Hz, 1.5mm displacement, duration 1 hour
Shock	\pm 2% max., three shocks of 100g, each of three planes



Connections are tinned
Suitable for reflow or wave soldering
Connections viewed from bottom
Core material is ferrite

Suggested land pattern



TFC Part No.	Inductance Code	Value	Ω d.c. max.	d.c. current Amps max.	s.r.f. min. MHz
CDR125 - 100MC	100M	10 μ H \pm 20%	0.05	2.65	24.2
CDR125 - 120MC	120M	12 μ H \pm 20%	0.05	2.50	21.2
CDR125 - 150MC	150M	15 μ H \pm 20%	0.06	2.45	18.9
CDR125 - 180MC	180M	18 μ H \pm 20%	0.06	2.40	16.1
CDR125 - 220MC	220M	22 μ H +20% -15%	0.07	2.20	15.2
CDR125 - 270MC	270M	27 μ H +20% -15%	0.08	2.00	13.9
CDR125 - 330MC	330M	33 μ H +20% -15%	0.10	1.80	12.8
CDR125 - 390MC	390M	39 μ H +20% -15%	0.11	1.65	11.6
CDR125 - 470MC	470M	47 μ H +20% -15%	0.12	1.50	10.4
CDR125 - 560MC	560M	56 μ H +20% -15%	0.15	1.38	9.12
CDR125 - 680MC	680M	68 μ H +20% -15%	0.17	1.26	8.50
CDR125 - 820MC	820M	82 μ H +20% -15%	0.20	1.14	7.85
CDR125 - 101MC	101M	100 μ H +20% -15%	0.25	1.05	6.92
CDR125 - 121MC	121M	120 μ H +20% -15%	0.28	0.95	6.34
CDR125 - 151MC	151M	150 μ H +20% -15%	0.40	0.85	5.55
CDR125 - 181MC	181M	180 μ H +20% -15%	0.48	0.77	5.10
CDR125 - 221MC	221M	220 μ H +20% -15%	0.52	0.70	4.51
CDR125 - 271MC	271M	270 μ H +20% -15%	0.70	0.63	4.37
CDR125 - 331MC	331M	330 μ H +20% -15%	0.80	0.57	3.90
CDR125 - 391MC	391M	390 μ H +20% -15%	1.08	0.52	3.55
CDR125 - 471MC	471M	470 μ H +20% -15%	1.20	0.48	3.25
CDR125 - 561MC	561M	560 μ H +20% -15%	1.34	0.44	2.94
CDR125 - 681MC	681M	680 μ H +20% -15%	1.78	0.40	2.64
CDR125 - 821MC	821M	820 μ H +20% -15%	2.00	0.36	2.42