

Type BRI4D (1 ~ 47) μ H

- # Low profile and high current
- # Low cost
- # Magnetically shielded
- # RoHS Compliant



TFC Part No.	Marking	Inductance L (μ H)	Test Freq. (0.1V)	DCR max.(Typ.) (m Ω)	Saturation rated current (A) max.		Temperature rise current (A) max.
					20°C	100°C	
BRI4D12-1R0N	1R0	1.0	100 KHz	75 (60)	2.10	1.90	1.70
BRI4D12-1R5N	1R5	1.5	100 KHz	89 (71)	1.80	1.60	1.60
BRI4D12-2R2N	2R2	2.2	100 KHz	106 (85)	1.40	1.20	1.50
BRI4D12-2R7N	2R7	2.7	100 KHz	125 (100)	1.30	1.10	1.40
BRI4D12-3R3N	3R3	3.3	100 KHz	150 (120)	1.20	1.00	1.30
BRI4D12-4R7N	4R7	4.7	100 KHz	196 (157)	1.10	0.95	1.20
BRI4D12-5R6N	5R6	5.6	100 KHz	256 (205)	1.00	0.80	1.05
BRI4D12-6R8N	6R8	6.8	100 KHz	312 (250)	0.90	0.75	1.00
BRI4D12-8R2N	8R2	8.2	100 KHz	362 (290)	0.80	0.65	0.90
BRI4D12-100M	100	10.0	100 KHz	450 (360)	0.70	0.60	0.80
BRI4D12-120M	120	12.0	100 KHz	500 (400)	0.65	0.55	0.75
BRI4D12-150M	150	15.0	100 KHz	700 (560)	0.60	0.50	0.70
BRI4D12-180M	180	18.0	100 KHz	775 (620)	0.50	0.40	0.60
BRI4D12-220M	220	22.0	100 KHz	1025 (820)	0.45	0.38	0.55
BRI4D12-270M	270	27.0	100 KHz	1162 (930)	0.40	0.35	0.50
BRI4D12-330M	330	33.0	100 KHz	1300 (1040)	0.38	0.32	0.45
BRI4D12-390M	390	39.0	100 KHz	1500 (1200)	0.35	0.30	0.43
BRI4D12-470M	470	47.0	100 KHz	1625 (1300)	0.32	0.28	0.40

TFC Part No.	Marking	Inductance L (μ H)	Test Freq. (0.1V)	DCR max.(Typ.) (m Ω)	Saturation rated current (A) max.		Temperature rise current (A) max.
					20°C	100°C	
BRI4D15-1R0N	1R0	1.0	100 KHz	81 (65)	3.00	2.60	1.75
BRI4D15-1R2N	1R2	1.2	100 KHz	100 (80)	2.50	2.20	1.70
BRI4D15-1R8N	1R8	1.8	100 KHz	121 (97)	2.20	1.80	1.65
BRI4D15-2R7N	2R7	2.7	100 KHz	137 (110)	2.00	1.70	1.60
BRI4D15-3R3N	3R3	3.3	100 KHz	150 (120)	1.80	1.60	1.55
BRI4D15-3R9N	3R9	3.9	100 KHz	168 (135)	1.60	1.40	1.45
BRI4D15-4R7N	4R7	4.7	100 KHz	187 (150)	1.50	1.20	1.35
BRI4D15-5R6N	5R6	5.6	100 KHz	212 (170)	1.40	1.10	1.25
BRI4D15-6R8N	6R8	6.8	100 KHz	230 (185)	1.30	1.05	1.15
BRI4D15-8R2N	8R2	8.2	100 KHz	250 (200)	1.20	1.00	1.05
BRI4D15-100M	100	10.0	100 KHz	312 (250)	1.00	0.85	0.95
BRI4D15-120M	120	12.0	100 KHz	356 (285)	0.85	0.80	0.85
BRI4D15-150M	150	15.0	100 KHz	475 (380)	0.80	0.70	0.80
BRI4D15-180M	180	18.0	100 KHz	618 (495)	0.75	0.65	0.70
BRI4D15-220M	220	22.0	100 KHz	692 (554)	0.65	0.58	0.65
BRI4D15-270M	270	27.0	100 KHz	980 (785)	0.60	0.50	0.55
BRI4D15-330M	330	33.0	100 KHz	1068 (855)	0.55	0.45	0.50
BRI4D15-390M	390	39.0	100 KHz	1200 (960)	0.50	0.40	0.45
BRI4D15-470M	470	47.0	100 KHz	1710 (1370)	0.45	0.38	0.42

Electrical specification
Inductance range

 BRI4D12 1.0~47.0 μ H 2.10~0.32A

 BRI4D15 1.0~47.0 μ H 3.00~0.45A

Saturation rated current

The current when the inductance becomes 30% lower than its initial value, (Ta=20°C)

Temperature rise current

 The current when temperature of coil increases up to max. $\Delta T=40^\circ\text{C}$, (Ta=20°C)

Operating temperature

-20 °C to 80 °C

Test equipment and set up

L tested by Agilent 4284A Precision LCR meter

DCR tested by Milli-ohm meter

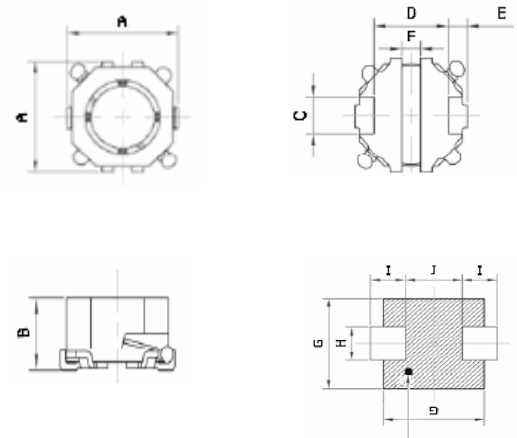
Electrical specifications at 25°C

BRI4D dimensions (mm)	A	B (max.)	C	D	E	F	G	H	I	J
BRI4D12	4.6±0.3	1.2	1.3	3.2	0.7	0.6	5.0	1.6	1.4	2.8
BRI4D15	4.6±0.3	1.5	1.3	3.2	0.7	0.6	5.0	1.6	1.4	2.8

Ordering information :

BRI4D12 - 470 M
 (1) (2) (3)

- (1) **Type: Surface Mountable Type**
 Style: Copper **B** Base with DR core and RI core,
4D is 4.6mm square and **12** is about 1.2mm height
- (2) **Inductance: 470 for 47.0 μH**
- (3) **Inductance tolerance: N: ± 30%; M: ± 20%**

BRI4D drawing


Wire in a slash part is forbidden